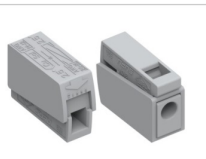


520连接盒用连接器
520 Push-in connection terminal block



520101-GY ● 灰色Gray

订货号 Order No.

IEC额定电流/电压/接线面积 [A]/[V]/[mm²]
IEC Current/Voltage/Wire range

24 / 400 / 供电侧power supply 1.0-2.5
24 / 400 / 照明侧lighting 0.5-2.5

UL额定电流/电压/接线面积 [A]/[V]/[AWG]
UL Current/Voltage/Wire range

20 / 600 / 供电侧power supply 14-12
20 / 600 / 照明侧lighting 20-16

剥线长度/扭力 [mm]/+
Strip length/Torque

9-11 / *

厚度/长度/高度 Thickness/Length/Height [mm]

8.1 / 20.75 / 14.67



520112-WT ○ 白灰色Light gray

24 / 400 / 供电侧power supply 1.0-2.5
24 / 400 / 照明侧lighting 0.5-2.5

20 / 600 / 供电侧power supply 14-12
20 / 600 / 照明侧lighting 20-16

9-11 / *

10.03 / 20.75 / 15.52



520201-GY ● 灰色Gray

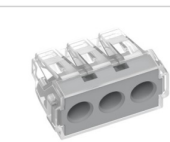
24 / 400 / 供电侧power supply 1.0-2.5
24 / 400 / 照明侧lighting 0.5-2.5

20 / 600 / 供电侧power supply 14-12
20 / 600 / 照明侧lighting 20-16

9-11 / *

8.1 / 43.5 / 14.67

522连接盒用连接器
522 Push-in connection terminal block



522303-GY ● 灰色Gray

订货号 Order No.

IEC额定电流/电压/接线面积 [A]/[V]/[mm²]
IEC Current/Voltage/Wire range

41 / 400 / 1.5-6.0

UL额定电流/电压/接线面积 [A]/[V]/[AWG]
UL Current/Voltage/Wire range

30 / 600 / 14-10

剥线长度/扭力 [mm]/+
Strip length/Torque

10-12 / *

厚度/长度/高度 Thickness/Length/Height [mm]

14.23 / 28.6 / 20.1



522402-OG ● 橙色Orange

24 / 400 / 0.75-2.5

20 / 600 / 18-12

10-12 / *

8.21 / 15.58 / 18.5



522404-BU ● 蓝色Blue

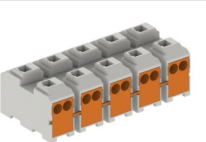
24 / 400 / 0.75-2.5

20 / 600 / 18-12

10-12 / *

12.32 / 15.8 / 18.58

525插线式连接器
525 Plug-in connector



525202 ○ 白灰色Light gray
525203
.....
525211
525212

订货号 Order No.

IEC额定电流/电压/接线面积 [A]/[V]/[mm²]
IEC Current/Voltage/Wire range

16 / 400 / 0.5-2.5

UL额定电流/电压/接线面积 [A]/[V]/[AWG]
UL Current/Voltage/Wire range

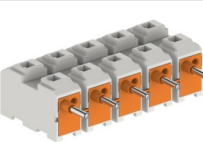
10 / 300 / 20-14

剥线长度/扭力 [mm]/+
Strip length/Torque

10-12 / *

厚度/长度/高度 Thickness/Length/Height [mm]

23.5 / (P-1) x10.0+8.5 / 15.3



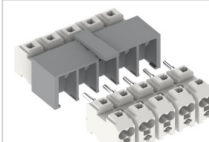
525402 ○ 白灰色Light gray
525403
.....
525411
525412

16 / 400 / 0.5-2.5

10 / 300 / 20-14

10-12 / *

23.5 / (P-1) x10.0+8.5 / 15.3



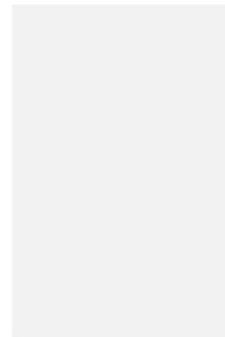
525802 ○ 白灰色Light gray
525803
525811
525812

16 / 400 / 0.5-2.5

10 / 300 / 20-14

10-12 / *

47.60 / (P-1)x10.0+12.8 / 16.50



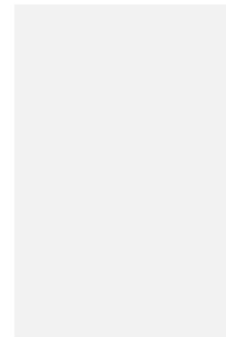
522406-BK ● 黑色Black

24 / 400 / 0.75-2.5

20 / 600 / 18-12

10-12 / *

15.58 / 16.1 / 18.5



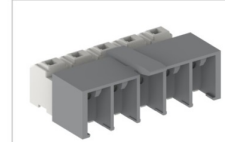
522408-WT ○ 白灰色Light gray

24 / 400 / 0.75-2.5

20 / 600 / 18-12

10-12 / *

15.58 / 20.52 / 18.5



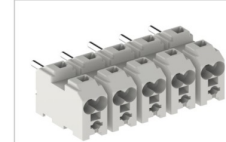
525202/500 ○ 白灰色Light gray
525203/500
525204/500
525205/500

16 / 400 / 0.5-2.5

10 / 300 / 20-14

10-12 / *

32 / 52.8 / 18.8



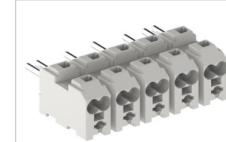
525402/00D ○ 白灰色Light gray
525403/00D
525404/00D
525405/00D

16 / 400 / 0.5-2.5

10 / 300 / 20-14

10-12 / *

23.5 / 48.5 / 15.3



525403/07D ○ 白灰色Light gray
525404/07D
525405/07D

16 / 400 / 0.5-2.5

10 / 300 / 20-14

10-12 / *

23.5 / 48.5 / 15.3